
Digital Set-Top Box
Цифровая телеприставка

User's Manual

Руководство пользователя

VA-5SD

The default password is 0000.
Пароль по умолчанию: 0000.



HUMAX

Thank you for purchasing a HUMAX product. Please read this user's manual carefully to be able to safely install, use and maintain the product at maximum performance. Keep this user's manual next to your product for future reference. The information in this user's manual is subject to change without notice.

Copyright (Copyright © 2010 HUMAX Corporation)

Not to be copied, used or translated in part or whole without HUMAX's prior consent in writing except approval of ownership of copyright and copyright law.

Warranty

The warranty does not cover parts which may become defective due to misuse of the information contained in this manual.

Meaning of Symbols



To reduce the risk of electric shock, do not remove cover (or back). No user serviceable parts inside. Refer servicing to qualified service personnel.



This symbol indicates dangerous voltage inside the product that presents a risk of electric shock or personal injury.



This symbol indicates important instructions accompanying the product.

Warnings, Cautions and Notes

Throughout the whole manual, pay special attention to the following marks that indicate hazardous situations.

Warning

Indicates a hazardous situation which could result in serious injury.

Caution

Indicates a situation which could damage the equipment or other apparatus.

Note

Indicates additional information to make the user aware of possible problems and information of any importance to help understand, use and maintain the installation.

Notice

'WEEE' Instructions



This product should not be disposed with other household wastes at the end of its working life. Please separate this from other types of wastes and recycle it responsibly to promote the sustainable reuse of material resources. This will prevent possible harm to the environment or human health from uncontrolled waste disposal.

Domestic users:

Please contact either the retailer where you purchased this product or their local government office for details of where and how they can take this item for environmentally safe recycling.

Business users:

Contact your supplier and check the terms and conditions of the purchase contract. This product should not be mixed with other commercial wastes for disposal.

Trademarks

- Viaccess is a trademark of France Telecom.
- Manufactured under license from Dolby Laboratories.
Dolby and the double-D symbol are trademarks of Dolby Laboratories.

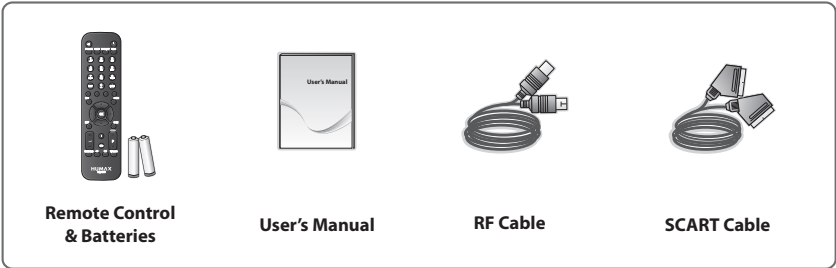
Contents

English

Notice	1
Quick Start Guide	4
1. Checking Accessories	4
2. Product Overview	4
3. Connections	8
4. Powering On	9
5. Menu Overview	10
Basic Operation	11
Channel List	12
Managing Channels	13
Editing Channels	13
Editing Favourite Channels	14
TV Guide	15
Preferences	16
Installation	17
NTV+ Auto Search	17
Search Channels	18
NTV+ Search Mode	18
Software Update (OTA)	19
Factory Default	19
System	20
Appendix	21
Specification	21
Safety Warning	23

Quick Start Guide

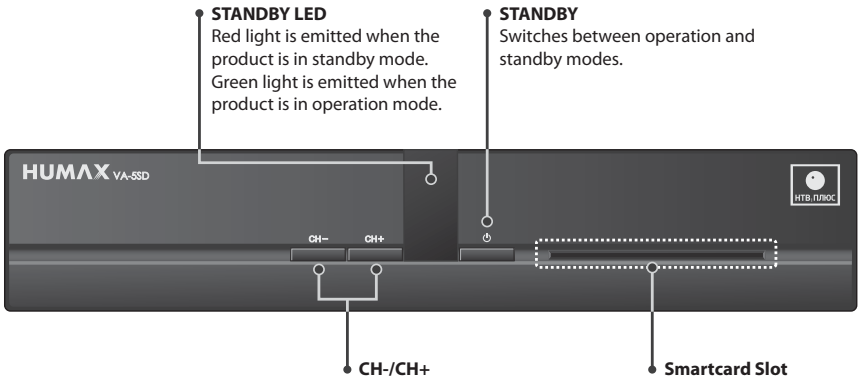
1. Checking Accessories



Note: The accessories may vary according to area.

2. Product Overview

Front Panel

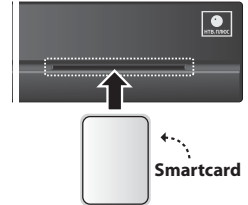


Note: The image shown may differ from the actual product.

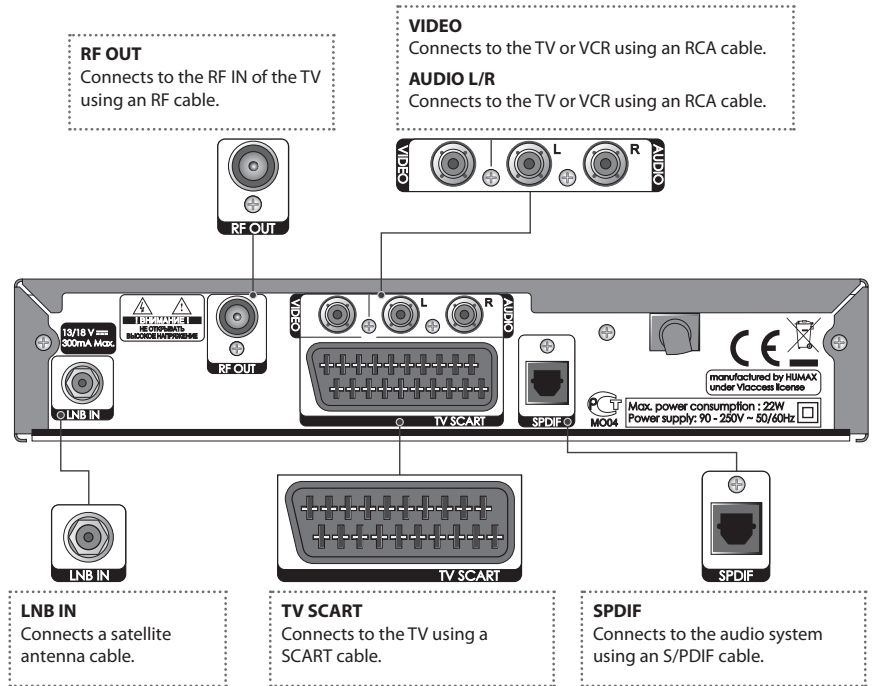
Quick Start Guide

Inserting the Smartcard

1. Hold Smartcard horizontally with the electronic chip facing downwards.
2. Insert the Smartcard into the slot.



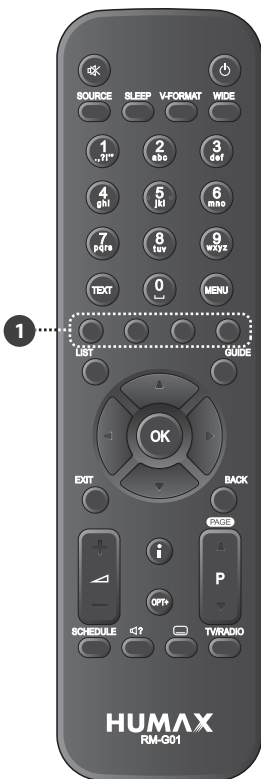
Rear Panel





Note: The image shown may differ from the actual product.

Quick Start Guide

Remote Control



	MUTE	Mutes audio.
	STANDBY	Switches between operation and standby modes.
	SOURCE	Controls the output of TV SCART.
	SLEEP	Sets the sleep timer.
	V-FORMAT	Not available
	WIDE	Sets the display format.
	NUMERIC	(0-9)
	TEXT	Enters the digital text service.
	MENU	Displays the main menu.
1	COLOUR Buttons	Colour keys for interactive applications.
	LIST	Displays the channel list.
	GUIDE	Displays the programme guide.
	EXIT	Exits all On-Screen Display (OSD) screens.
	BACK	Returns to the previous channel. Goes back to the previous screen.
	OK	Selects a menu or confirms a selection.
	ARROW Buttons	Moves the cursor up, down, left or right.

Note: The image shown may differ from the actual product.



Adjusts the audio volume.



Changes the channel or page.



Displays the channel and programme information.



Displays the channels attributes.



Displays the schedule list.



AUDIO

Displays the audio list.



SUBTITLE

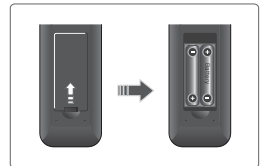
Displays the subtitle language list.



Switches between TV and radio modes.

Inserting Batteries

1. Press the hook upward and lift the battery cover off.
2. Insert the batteries(supplied) matching the plus(+) and minus(-) at each end.
3. Close the cover.



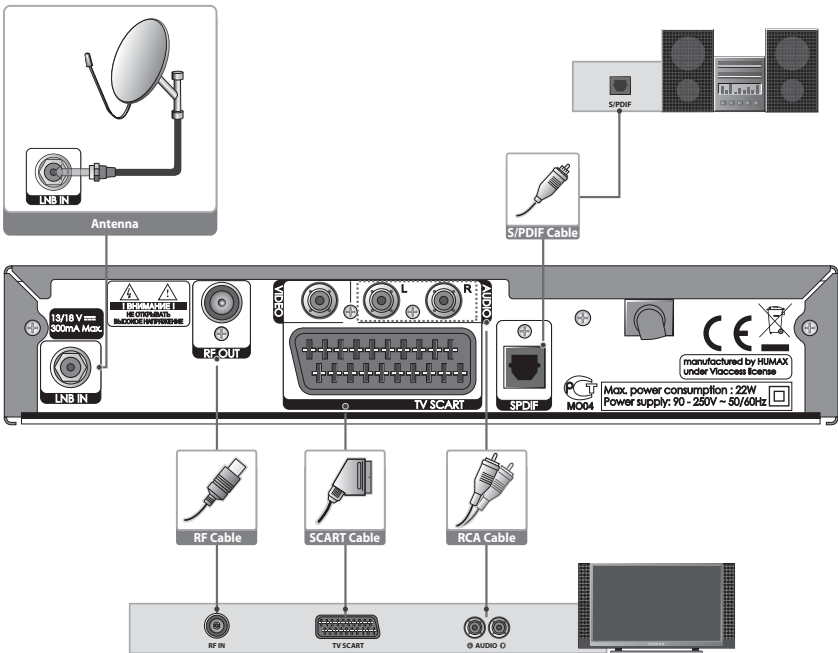
Quick Start Guide

3. Connections

This section describes how to connect your product to match your particular devices setup and to gain optimum signal quality. The product provides various interfaces to connect to the TV or other devices. Select the most appropriate procedure depending on the device you have.

Warning: Connect all components before plugging any power cords into the wall outlet. Always turn off the product, TV and other components before you connect or disconnect any cables.

Note: If you encounter any problems setting up your product, please contact your local retailer or HUMAX Customer Helpline.



Quick Start Guide

Connecting the Antenna

Connect an RF cable from your TV to **LNB IN** connector.

Connecting the TV

① TV with the SCART connector

Connect the product and TV using a SCART cable.

② TV with the RCA connector

Connect the product and TV using an RCA cable for video and audio.

Note: When using the digital audio system, connect the product and the digital audio system using an S/PDIF cable for audio.

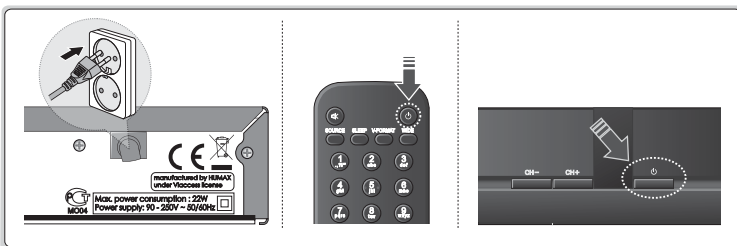
③ TV with the RF connector

Connect the product and the TV using an RF cable.

Note: Tune the TV to an UHF channel if the product is connected to the TV using an RF cable.

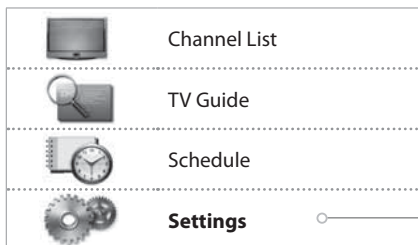
4. Powering On

1. Connect the power cord of the product to a wall outlet.
2. Power on by pressing the **STANDBY** button on the remote control or the **STANDBY** button at the front of the product.



Quick Start Guide

5. Menu Overview



Preferences

- Parental Control
- Language
- Time
- Video
- Audio
- UHF Tuning
- Screen Display

Edit Channels

- Edit Channel List
- Edit Favourite List

Installation

- NTV+ Auto Search
- Search Channels
- NTV+ Search Mode
- Software Update
- Factory Default

System

- System Information
- Signal Detection
- Power Management
- Conditional Access

How to Navigate



Displays the main menu



Moves among menus or options



Selects (Enters) a menu or confirms a selection



Changes or adjusts the option



Goes back to the previous screen



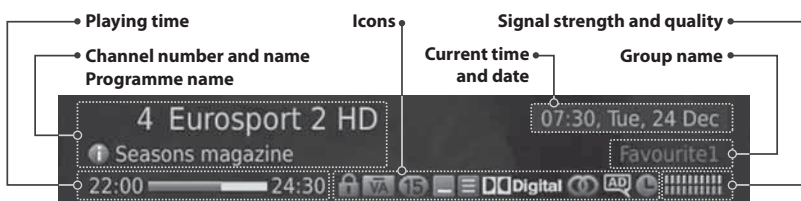
Enters the number (0~9)



Exits all On-Screen Display (OSD) screens

Basic Operation

- 1 **Changing Channels:** Press the P▲/▼ button or enter the channel number directly. (0-9)
- 2 **Volume:** To adjust the audio volume, press the ▲ +/- button.
- 3 **Audio:** Press the **AUDIO** button. Select the audio language.
- 4 **Display Format:** Press the **WIDE** button to set the display format according to the screen ratio.
- 5 **Sleep:** Press the **SLEEP** button to set the automatic turn off time.
- 6 **Subtitle:** Press the **SUBTITLE** button. Select the subtitle language.
- 7 **Teletext:** Press the **TEXT** button. To display the teletext menu, press the **MENU** button in teletext mode.
- 8 **Programme Information (i-plate):** Press the **i** button while watching a programme to display the i-plate.



Icons

The icons represent the information and services provided.

	Locked programme		Subtitle
	Scrambled programme (CAS icons)		Teletext
	Parental level (minimum age for viewing)		Multiaudio
	Scheduled programme		Compressed audio

Note: Programme information is not displayed when there is no programme information.

Channel List

The channel list will help you find the channel you want to watch quickly and easily.

You can access the channel list in several ways.

- ❖ Press the **LIST** button.
- ❖ Press the **MENU** button and select **Channel List**.
- ❖ Press the **OK** button while watching a programme.

Changing Channels

Select the channel you want to watch and press the **OK** button.

Press the **GREEN** button and select a channel group.

Press the **RED** button to sort the list in numerical or alphabetical order.

Note: You can also change the channel group using the **▶** button.



Editing Channels in Channel List

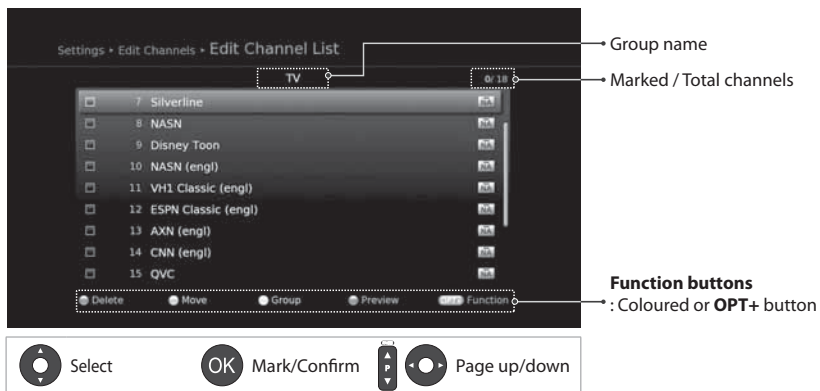
1. Select a channel you want to edit and press the **YELLOW** button.
2. Select an option.
 - **Favourite:** Select a favourite group you want to include the channel in and press the **OK** button.
 - **Lock:** Select **On** or **Off**.
 - **Delete:** Press the **OK** button.
 - **Rename:** Press the **OK** button and enter the name in the keyboard.
3. Select **OK** to save and exit.



Editing Channels

MENU → Settings → Edit Channels → Edit Channel List

The **Edit Channel List** menu will help you delete, move, lock or rename multiple channels.



Note:

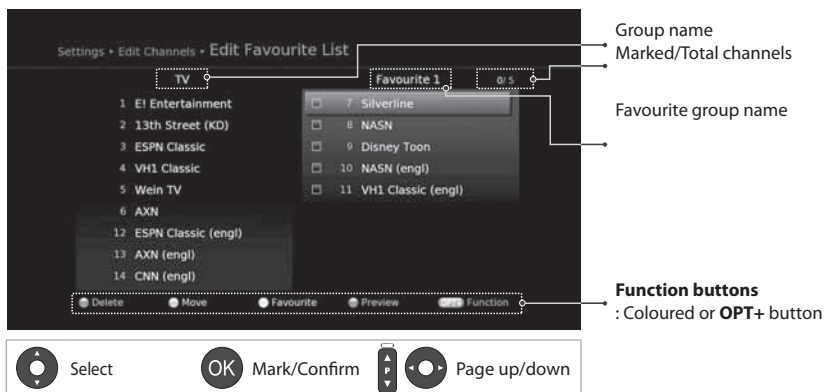
- The channels automatically numbered by broadcaster cannot be renamed, deleted or moved.
- NTV+ channels cannot be deleted.

Managing Channels

Editing Favourite Channels

MENU → Settings → Edit Channels → Edit Favourite List

The **Edit Favourite List** menu will help you add or remove channels from the favourite groups.

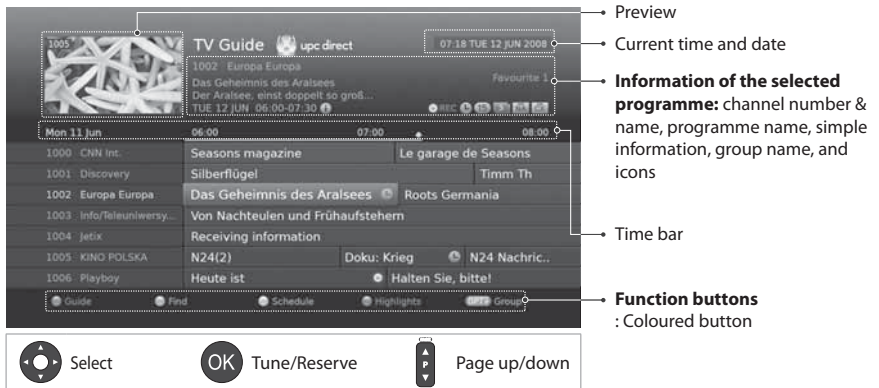


Note: The channels automatically numbered by broadcaster cannot be renamed, deleted or moved.

The TV guide is an on-screen guide of grid type which displays the programme information of channels in time and date order.

You can access the TV guide in several ways.

- ❖ Press the **GUIDE** button.
- ❖ Press the **MENU** button and select **TV Guide**.



Select a programme to watch and press the **OK** button twice.
To set reminders, select a future programme and press the **OK** button.

- **Guide:** You can displays the programme information of channels in time and date order.
- **Find:** You can find the programmes more specifically using the keyword or genre.
- **Schedule:** You can manage reminders or recordings in more detail.
- **Group:** You can list the channels of other groups. Select **NTV+** to list the genre of NTV+ channels. Select a genre.

Preferences

In this chapter you can set options for parental control, language, time, video, audio, UHF Tuning and screen display.

- **Parental Control:** Set the age limit and change password.
- **Language:** Select **System Language, Audio Language** or **Subtitle Language**.
- **Time:** Set the power on/off timer.
- **Video:** Set the video output control.
- **Audio:** Set the audio output control.
- **UHF Tuning:** Set the UHF tuning channel.
- **Screen Display:** Set the screen display setting.



MENU → Settings → Installation

You will be prompted to enter the password to access this menu.
The default password is 0000. If you have forgotten your password, please contact your local distributor.



NTV+ Auto Search

1. Select **NTV+ Auto Search**.
2. Set the options and select **Search**.
3. Select **OK** to save and exit.

Note:

- Select **Stop** and press the **OK** button to stop the channel search.
- If the transponder information is changed, search channels of that frequency band.



Installation

Search Channels

1. Select **LNB Only** or **DiSEqC**.
2. Set the satellite by selecting a satellite figure and press the **OK** button.
 - > **Satellite:** Select the satellite.
 - > **LNB Frequency:** Select the LNB frequency.
 - > **22kHz Tone:** Select **On** when using a 22kHz tone switch box.
 - > **DiSEqC:** Select the DiSEqC switch.
 - > **Test Transponder:** Check the signal status of each transponder and select the one with the best quality.
3. Set the transponder by selecting **Transponder**.



NTV+ Search Mode

You can search channels that are in the List.

Searching Channels in Bouquet List

Select **On** to search channels that are in the Bouquet list.

Searching Other Channels

If you want to search channels that are not in the Bouquet list, go to **MENU > Settings > Installation > Search Channels**.

The searched channels will be added to **Others TV** or **Others RADIO** in the channel list.



Software Update (OTA)

You can also search and download new software manually.

Automatic Update

You can update software via the transponder pre-appointed by the manufacturer.

Manual Update

You can update software via another transponder.

Note: Visit the HUMAX website to check the latest news and newly released software versions. (<http://www.humaxdigital.com>) OTA, an abbreviation of Over-the-Air, means that the software can be downloaded through a broadcast system.



Factory Default

You can restore the product to the default setting.



Menu On/Off



Select



Confirm



Enter 0~9

System

- **System Information:** The system information is displayed.
- **Signal Detection:** You can check the signal strength and quality of the searched channels.
- **Power Management:** You can minimise the power consumption.
- **Conditional Access:** The conditional access information is displayed.



Specification

Tuner & Channel	
Input Connector	F-Type, IEC 169-24, Female
Frequency Range	950MHz to 2150MHz
Signal Level	-65dBm to -25dBm
LNB Power & Polarisation	18.3V /13.3Vdc Max current: 500mA with overload protection
22KHz Tone	22KHz \pm 4KHz
DiSEqC Control	Compatible to DiSEqC 1.0/DiSEqC 1.2 (USALS)
Audio/Video Decoding	
Audio Decoding	ISO/IEC 13818-3 (MPEG-2 audio / MUSICAM)
Audio Mode	Single/Dual mono/Stereo/Joint stereo
Video Decoding	MPEG-2 Main Profile@Main Level H.264/AVC Main Profile@Level 3
Video Format	4:3 and 16:9 with letterbox or pillar box
Video Resolution	576i
Memory	
Flash Memory	8MB
RAM	64MB
EEPROM	32KB
Audio/Video In/Out	
Video	TV-SCART(CVBS,RGB), RCA(CVBS)
Audio	TV SCART, S/PDIF(Digital Audio Output), RCA(Audio L/R)

Appendix

Power Supply	
Input Voltage	90-250V a.c., 50/60Hz
Type	SMPS
Power Consumption	Max. 22W (Standby: Under 1W)
Protection	Separate internal fuse. The input should be protected against lightning.
Physical Specification	
Size (w/h/d)	215mm×158mm×41mm
Weight	847g
Operating Temperature	0 °C to +45 °C

Note: The specifications are subject to change without notice.

Safety Warning

This product has been manufactured to comply with international safety standards. Please read the following safety precautions carefully.

Safety Instructions and Precautions

1. MAINS SUPPLY

- Operate this product only from the type of power supply indicated on the marking label. If you are not sure of the type of power supplied to your home, consult your local power company.
- Disconnect the product from the mains before you start any maintenance or installation procedures.

2. OVERLOADING

- Do not overload a wall outlet, extension cord or adapter as this may result in electric fire or shock.

3. LIQUID

- The product should not be exposed to liquid of any kind. In addition, no objects filled with liquid should be placed on the apparatus.

4. CLEANING

- Disconnect the product from the wall outlet before cleaning.
- Use a light damp cloth (no solvents) to dust the product.

5. VENTILATION

- The slots on top of the product must be left uncovered to allow proper airflow into the unit.
- Do not stand the product on soft furnishings or carpets.
- Do not stack electronic equipments on top of the product.

6. ATTACHMENTS

- Do not use any unsupported attachments as these may be hazardous or cause damage to the product.

7. LIGHTNING, STORM OR NOT IN USE

- Unplug the product from the wall outlet and disconnect the antenna during a thunderstorm or when left unattended and unused for long periods of time. This will prevent damage to the unit due to lightning and power-surges.

8. EXTRANEIOUS OBJECTS

- Do not insert anything through the openings in the unit, where they can touch dangerous voltage points or damage parts.

9. REPLACEMENT OF PARTS

- When replacement of parts is required, be sure the service technician uses replacement parts specified by the manufacturer or those that have the same characteristics as the original part. Unauthorized substitution may result in additional damage to the unit.

10. CONNECTION

[Satellite] CONNECTION TO THE SATELLITE DISH LNB

- Disconnect the product from the mains before connecting or disconnecting the cable from the satellite dish. Failure to do so can damage the LNB.

[Cable] CONNECTION TO THE CABLE TV SIGNAL

- Connect all components before plugging any power cords into the wall outlet. Always turn off the product, TV and other components before you connect or disconnect any cables.

Appendix

[Terrestrial] CONNECTION TO THE AERIAL

- Disconnect the product from the mains before connecting or disconnecting the cable from the aerial. Failure to do so can damage the aerial.

11. CONNECTION TO THE TV

- Disconnect the product from the mains before connecting or disconnecting the cable from the TV. Failure to do so can damage the TV.

12. EARTHING

[Satellite] The LNB cable must be earthed to the system earth for the satellite dish.

13. LOCATION

- Place the product indoors to avoid exposing it to lightning, rain or sun. Do not place it near a radiator or heat register.
- We recommend that the product has 10 cm clearance from any other appliances susceptible to electromagnetic influences, such as a TV or a VCR.
- Do not block the openings with any object, and do not place the product on a bed, sofa, rug, or other similar surface.
- If you place the product on a rack or a bookcase, ensure that there is adequate ventilation and that you have followed the manufacturer's instructions for mounting.
- Do not place the product on an unstable cart, stand, tripod, bracket, or table where it can fall. A falling product can cause serious injury to a child or adult, and serious damage to the appliance.

Warning

1. To avoid damage of the power cord or plug;

- Do not modify or process the power cord or plug arbitrarily.
- Do not bend or twist the power cord.
- Make sure to disconnect the power cord holding the plug.
- Keep heating appliances as far as possible from the power cord in order to prevent the cover vinyl from melting.
- The mains plug, as a disconnection device, shall remain readily accessible by the user.

2. To avoid electrical shock;

- Do not open the main body.
- Do not insert metal or inflammable objects inside the product.
- Do not touch the power plug with wet hands.
- Disconnect the power cord in case of lightning.

3. To avoid damage of product;

- Do not use the product when it is out of order. If you continue to use the product when defective, serious damage can be caused. Make sure to contact your local product distributor if the product is out of order.
- Do not insert metal or alien substance into the slots for the modules or Smartcards. (where applicable) It may cause damage to the product and reduce its life span.

4. To avoid damage of the hard disk drive (PVR only)

- Do not move the product or turn the power off suddenly while the hard disk drive is running.
- The company shall not be liable for any corruption of data on the hard disk drive caused by carelessness or misuse.

www.humaxdigital.com

C-MANUAL/VA5SD/100GBRU



20000-00264

